



# CorePro LED PLC 2P



## CorePro LED PLC 8.9W 840 2P G24d-3

CorePro, LED, PL-C, EM/Mains, G24D-3 ROT, 8.9 W, 26W PL-C, 4000 K, 1100 lm, CRI 82, 30000 hour(s)

CorePro LED PLC 2P integrates a LED light source into a traditional fluorescent form factor. This product is the ideal solution for uplamping in general lighting applications: it meets basic lighting requirements, offers significant energy savings, and is environmentally friendly.

### Product data

General Information	
Cap-Base	G24d-3
Nominal lifetime	30,000 hour(s)
Switching Cycle	50,000
Lighting Technology	LED
Flux measurement reference	Sphere
Warranty period	3 years
Light Technical	
Color Code	840 [CCT of 4000K]
Beam Angle (Nom)	120 degree(s)
Luminous Flux	1,100 lm
Color Designation	Cool White (CW)
Correlated Color Temperature (Nom)	4000 K
Luminous Efficacy (rated) (Nom)	123 lm/W
Color Consistency	<6
Color rendering index (CRI)	82
LLMF At End Of Nominal Lifetime (Nom)	70 %

Photobiological safety according to EN 62471	RG1
Operating and Electrical	
Input Frequency	50 to 60 Hz
Power Consumption	8.9 W
Lamp Current (Nom)	52 mA
Starting Time (Nom)	0.5 s
Warm-up time to 60% light	0.5 s
Power Factor (Fraction)	0.9
Voltage (Nom)	220-240 V
LED alternative to fluorescent lamp power	26W PL-C
Inrush current at mains	2.77
Max. lamp no. on MCB B type 10A - Mains	198
Max. lamp no. on MCB B type 10A – EM ballast without Compensation Capacitor.	198
Max. lamp no. on MCB B type 10A – EM ballast with Compensation Capacitor.	-
Max. lamp no. on MCB B type 16A - Mains	317

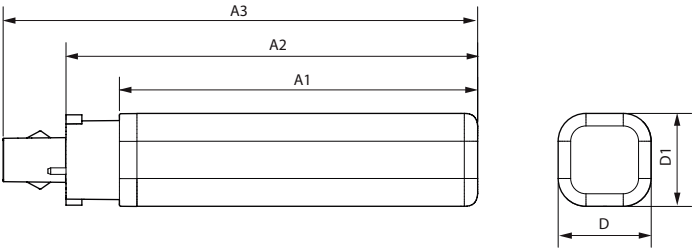
CorePro LED PLC 2P

Max. lamp no. on MCB B type 16A – EM ballast without Compensation Capacitor.	317
Max. lamp no. on MCB B type 16A – EM ballast with Compensation Capacitor.	-
Ballast Compatibility	EM/Mains
Temperature	
T-Case Maximum (Nom)	75 °C
Controls and Dimming	
Dimmable	No
Mechanical and Housing	
Bulb Finish	Frosted
Bulb Material	Plastic
Product Length	148 mm
Bulb Shape	PL-C
Net Weight (Piece)	0.090 kg
Approval and Application	
Energy Efficiency Class	E
Energy Saving Product	Yes
Approval Marks	RoHS compliance CE marking KEMA Keur certificate

Energy Consumption kWh/1000 h	9 kWh
EPREL Registration Number	1820630
CE mark	Yes
EU RoHS compliant	Yes
Flickering value (PstLM) - Flickering value as per EN 61000-3-3	1
Stroboscopic effect visibility measure (SVM)	0.4
Ambient temperature range	-20 to +35 °C

Product Data	
Order product name	CorePro LED PLC 8.9W 840 2P G24d-3
Full product name	CorePro LED PLC 8.9W 840 2P G24d-3
Full product code	872016928760000
Order code	929003757502
Material Nr. (12NC)	929003757502
Numerator - Quantity Per Pack	1
EAN/UPC - Product/Case	8720169287600
Numerator - Packs per outer box	10
EAN/UPC - Case	8720169287617

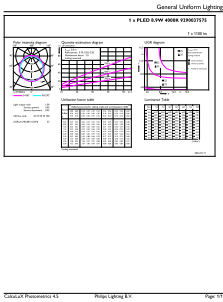
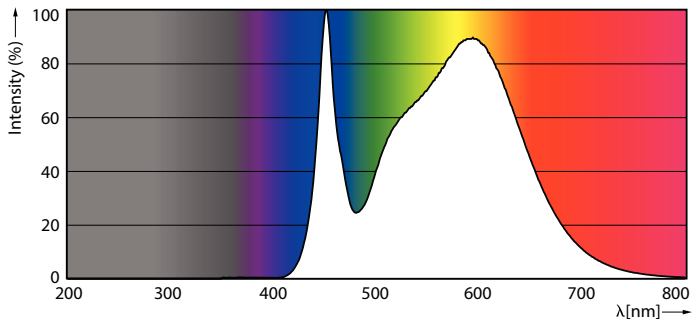
Dimensional drawing



Product	D1	D	A1	A2	A3
CorePro LED PLC 8.9W 840 2P G24d-3	34 mm	34 mm	129 mm	148 mm	171 mm

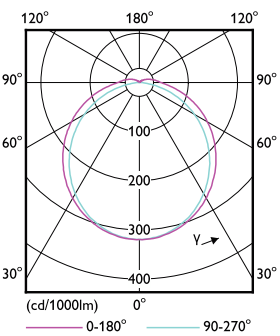
CorePro LED PLC 2P

Photometric data



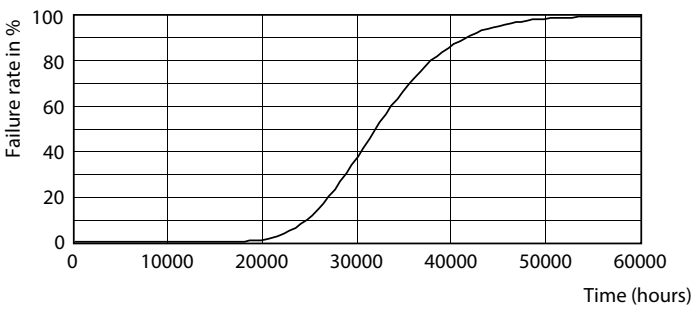
Spectral Power Distribution Colour - CorePro LED PLC 8.9W 840 2P G24d-3

General uniform lighting - CorePro LED PLC 8.9W 840 2P G24d-3

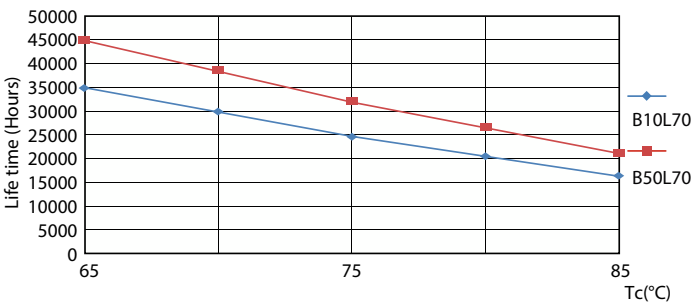


Light Distribution Diagram - CorePro LED PLC 8.9W 840 2P G24d-3

Lifetime



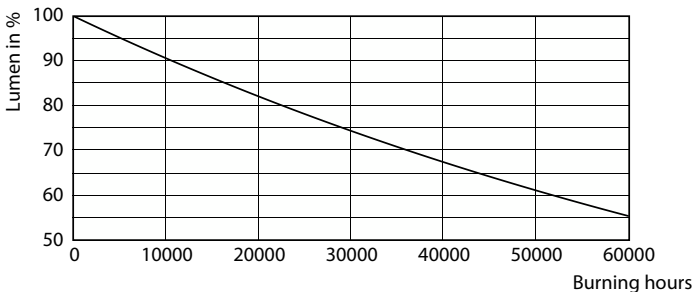
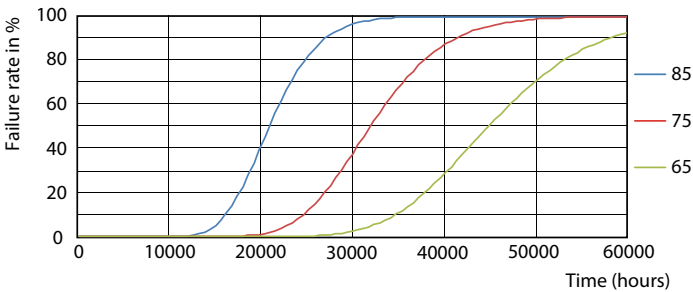
Life Expectancy Diagram



LifetimeVsTc

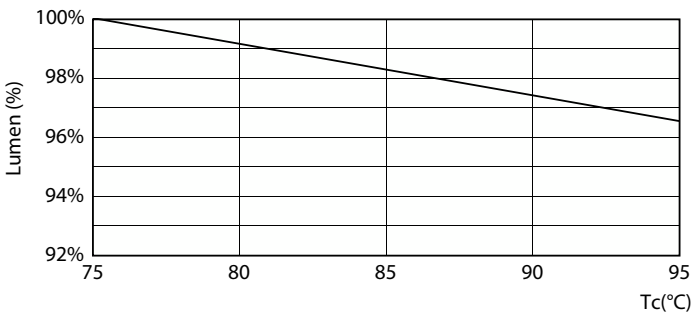
CorePro LED PLC 2P

Lifetime



FailureRate

Lumen Maintenance Diagram - CorePro LED PLC 8.9W 840 2P G24d-3



Lumen Maintenance Diagram - CorePro LED PLC 8.9W 840 2P G24d-3

